



中国认可
国际互认
检测
TESTING
CNAS L4743

Test Report

No. AJFS2110008521FF

Date: OCT.28, 2021

Page 1 of 5

ZHEJIANG DWD ENVIRONMENTAL TECHNOLOGY CO., LTD
NO.1 HUAQIAN INDUSTRIAL ZONE, TIANTAI, ZHEJIANG, CHINA

Sample Description: FIRE BLANKET

Color: BLACK

Density: 520gsm

Thickness: 4.5mm±0.2mm

Composition: PRE-OXIDIZED PAN FIBER

Style/Item No.: CF-520-37

Supplier: ZHEJIANG DWD ENVIRONMENTAL TECHNOLOGY CO., LTD

Manufacturer: ZHEJIANG DWD ENVIRONMENTAL TECHNOLOGY CO., LTD

End Use Application: FIREPROOF, HEAT INSULATION

The above sample(s) was / were submitted and identified on behalf of the client. SGS is not responsible for the authenticity, integrity and results of the data and information and / or the validity of the conclusion arising therefrom. Results apply to the sample as received.

Test Requested:

To determine the flammability (Flooring Materials class B1) in accordance with DIN 4102-1 (May 1998) Fire behaviour of building materials and elements Part 1: Classification of building materials, Requirements and testing.

Test Results: --- See attached sheet ---

Conclusion:

The tested sample **meets** the flammability requirements of class **B1** (Flooring materials) of building materials under DIN 4102-1 (May 1998).

Test Period:

Sample Receiving Date : OCT.09, 2021
Test Performing Date : OCT.09, 2021 TO OCT.25, 2021

Signed for and on behalf of
SGS-CSTC Standards Technical Services Co., Ltd. Anji Branch

Allen Zou
Approved Signatory

scan to see the report



AJFS2110008521FF



SGS-CSTC Standards Technical Services Co., Ltd.
Anji Branch Fire Technology Service

Unless otherwise agreed in writing, this document is issued by the Company subject to its General Conditions of Service printed overleaf, available on request or accessible at <http://www.sgs.com/en/Terms-and-Conditions.aspx> and, for electronic format documents, subject to Terms and Conditions for Electronic Documents at <http://www.sgs.com/en/Terms-and-Conditions/Terms-e-Documents.aspx>. Attention is drawn to the limitation of liability, indemnification and jurisdiction issues defined therein. Any holder of this document is advised that information contained hereon reflects the Company's findings at the time of its intervention only and within the limits of Client's instructions, if any. The Company's sole responsibility is to its Client and this document does not exonerate parties to a transaction from exercising all their rights and obligations under the transaction documents. This document cannot be reproduced except in full, without prior written approval of the Company. Any unauthorized alteration, forgery or falsification of the content or appearance of this document is unlawful and offenders may be prosecuted to the fullest extent of the law. Unless otherwise stated the results shown in this test report refer only to the sample(s) tested and such sample(s) are retained for 30 days only.

Attention: To check the authenticity of testing / inspection report & certificate, please contact us at telephone: (86-755) 8307 1443, or email: CN.Doccheck@sgs.com

No. 301, Sunlight Road, 2 Block, Sunlight Industry Zone, Anji County, Zhejiang Province, China 313300 t (86-572) 5018825 f (86-572) 5018829 www.sgs.com.cn
中国·浙江·安吉县阳光工业园二区阳光大道301号 邮编: 313300 t (86-572) 5018825 f (86-572) 5018829 e sgs.china@sgs.com

I. Test Conducted

This test was conducted as per DIN 4102-14:1990 Fire behaviour of building materials and elements; floor coverings and floor coating; Determination of the rate of flame spread using a radiant heat source and DIN 4102-1:1998 Clause 6.2.

Classification in according to DIN 4102-1 (May 1998) Clause 6.1-Class B1 materials

II. Sample details

Sample description	Fire blanket
Color	Black
Thickness	5mm
Density	107.2 kg/m ³
Specimen size	1050mm×230mm×4.5mm & 190mm×90mm×4.5mm

III. Conditioning

Prior to testing, the sample was conditioned,

At least 14 days at a temperature of 23±2°C and at a relative humidity of 50±5%

IV. Test results

1) DIN 4102 Part 14:1990 Radiant Heat Source Test

Distance (cm)	S1	S2	S3
	Time (min: s)	Time (min: s)	Time (min: s)
5	-	-	-
10	-	-	-
15	-	-	-
20	-	-	-
25	-	-	-
30	-	-	-
35	-	-	-
40	-	-	-
45	-	-	-
50	-	-	-
55	-	-	-
60	-	-	-

To be continued....



Unless otherwise agreed in writing, this document is issued by the Company subject to its General Conditions of Service printed overleaf, available on request or accessible at <http://www.sgs.com/en/Terms-and-Conditions.aspx> and, for electronic format documents, subject to Terms and Conditions for Electronic Documents at <http://www.sgs.com/en/Terms-and-Conditions/Terms-e-Document.aspx>. Attention is drawn to the limitation of liability, indemnification and jurisdiction issues defined therein. Any holder of this document is advised that information contained hereon reflects the Company's findings at the time of its intervention only and within the limits of Client's instructions, if any. The Company's sole responsibility is to its Client and this document does not exonerate parties to a transaction from exercising all their rights and obligations under the transaction documents. This document cannot be reproduced except in full, without prior written approval of the Company. Any unauthorized alteration, forgery or falsification of the content or appearance of this document is unlawful and offenders may be prosecuted to the fullest extent of the law. Unless otherwise stated the results shown in this test report refer only to the sample(s) tested and such sample(s) are retained for 30 days only.

Attention: To check the authenticity of testing / inspection report & certificate, please contact us at telephone: (86-755) 8307 1443, or email: CN.Doccheck@sgs.com

65	-	-	-
70	-	-	-
75	-	-	-
80	-	-	-
85	-	-	-
90	-	-	-
95	-	-	-
100	-	-	-
105	-	-	-
Extinguishing time	720s	720s	720s
Max. flame spread distance (cm)	0	0	0

	S1	S2	S3	Average
Flame front distance at 10 min (cm)	0	0	0	0
Flame front distance at 20 min (cm)	-	-	-	-
Flame front distance at 30 min (cm)	-	-	-	-
Radiant flux at 10 minutes, RF10 (W/cm ²)	≥1.1	≥1.1	≥1.1	≥1.1
Radiant flux at 20 minutes, RF20 (W/cm ²)	-	-	-	-
Radiant flux at 30 minutes, RF30 (W/cm ²)	-	-	-	-

Conclusion:

Specimen No.	S1	S2	S3	Average
CHF (W/cm ²)	≥1.1	≥1.1	≥1.1	≥1.1
Integral of light attenuation (% min)	1.2	1.1	1.0	1.1

To be continued...



Unless otherwise agreed in writing, this document is issued by the Company subject to its General Conditions of Service printed overleaf, available on request or accessible at <http://www.sgs.com/en/Terms-and-Conditions.aspx> and, for electronic format documents, subject to Terms and Conditions for Electronic Documents at <http://www.sgs.com/en/Terms-and-Conditions/Terms-e-Documents.aspx>. Attention is drawn to the limitation of liability, indemnification and jurisdiction issues defined therein. Any holder of this document is advised that information contained hereon reflects the Company's findings at the time of its intervention only and within the limits of Client's instructions, if any. The Company's sole responsibility is to its Client and this document does not exonerate parties to a transaction from exercising all their rights and obligations under the transaction documents. This document cannot be reproduced except in full, without prior written approval of the Company. Any unauthorized alteration, forgery or falsification of the content or appearance of this document is unlawful and offenders may be prosecuted to the fullest extent of the law. Unless otherwise stated the results shown in this test report refer only to the sample(s) tested and such sample(s) are retained for 30 days only.

Attention: To check the authenticity of testing / inspection report & certificate, please contact us at telephone: (86-755) 8307 1443, or email: CN.Doccheck@sgs.com

SGS-CSTC Inspection & Testing Services Co., Ltd.
Anji Branch Fire Technology Service

No. 301, Sunlight Road, 2 Block, Sunlight Industry Zone, Anji County, Zhejiang Province, China 313300 t (86-572) 5018825 f (86-572) 5018829 www.sgs.com.cn
中国·浙江·安吉县阳光工业园二区阳光大道301号 邮编: 313300 t (86-572) 5018825 f (86-572) 5018829 e sgs.china@sgs.com

2) Normal Flammability Test according to DIN 4102-1 Clause 6.2

Surface ignition

Fire application time: 15s

Parameter	1	2	3	4	5
Whether or not flaming extinguished before reach the gauge mark (Yes/No)	Yes	Yes	Yes	Yes	Yes
Whether or not flaming reach the measuring mark within 20 seconds (Yes/No)	No	No	No	No	No
Time for the flame tip to reach the gauge mark (s)	NA	NA	NA	NA	NA
Afterflame time (s)	0	0	0	0	0
Max. flame height (cm)	2	2	2	3	3
Molten dripping (Yes/No)	No	No	No	No	No
Smoke developments (visual impression)	Slight				

Note: NA---Not applicable

Criteria for classification B1

- 1) Materials used as flooring may be classified as B1 materials if they pass the fire test specified in DIN 4102-14 and meet the requirements for B2 materials.
- 2) The fire test in DIN 4102-14 shall be deemed passed if the mean critical irradiance, I, for three specimens is at least 0.45 W/cm², and the mean light absorptance obtained by integrating over 30 minutes for three specimens is no greater than 750 %*min.

Criteria for classification B2

For each specimen flaming doesn't reach the gage mark (150mm marks) within 20s after flame application.

STATEMENTS:

This declaration of conformity is only based on the result of this laboratory activity, the impact of the uncertainty of the results was not included.

This test report does not replace any mandatory certification of the product that may be required.

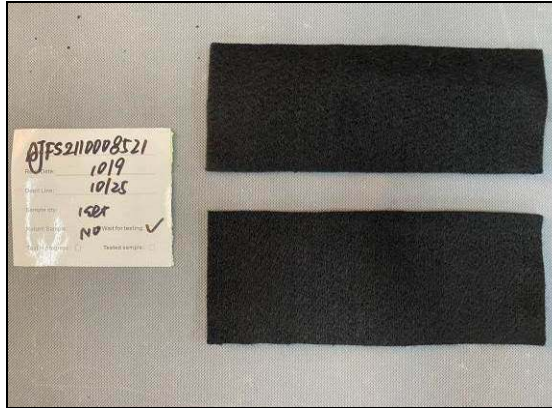
The test results relate to the behaviour of the test specimens of a product under the particular conditions of the test; they are not intended to be the sole criterion for assessing the potential fire and smoke hazard of the product in use.

To be continued...



Unless otherwise agreed in writing, this document is issued by the Company subject to its General Conditions of Service printed overleaf, available on request or accessible at <http://www.sgs.com/en/Terms-and-Conditions.aspx> and, for electronic format documents, subject to Terms and Conditions for Electronic Documents at <http://www.sgs.com/en/Terms-and-Conditions/Terms-e-Documents.aspx>. Attention is drawn to the limitation of liability, indemnification and jurisdiction issues defined therein. Any holder of this document is advised that information contained hereon reflects the Company's findings at the time of its intervention only and within the limits of Client's instructions, if any. The Company's sole responsibility is to its Client and this document does not exonerate parties to a transaction from exercising all their rights and obligations under the transaction documents. This document cannot be reproduced except in full, without prior written approval of the Company. Any unauthorized alteration, forgery or falsification of the content or appearance of this document is unlawful and offenders may be prosecuted to the fullest extent of the law. Unless otherwise stated the results shown in this test report refer only to the sample(s) tested and such sample(s) are retained for 30 days only.
Attention: To check the authenticity of testing / inspection report & certificate, please contact us at telephone: (86-755) 8307 1443, or email: CN.Doccheck@sgs.com
 No. 301, Sunlight Road, 2 Block, Sunlight Industry Zone, Anji County, Zhejiang Province, China 313300 t (86-572) 5018825 f (86-572) 5018829 www.sgs.com.cn
 中国·浙江·安吉县阳光工业园二区阳光大道301号 邮编: 313300 t (86-572) 5018825 f (86-572) 5018829 e sgs.china@sgs.com

Photo Appendix:



SGS authenticate the photo on original report only

End of Report



Unless otherwise agreed in writing, this document is issued by the Company subject to its General Conditions of Service printed overleaf, available on request or accessible at <http://www.sgs.com/en/Terms-and-Conditions.aspx> and, for electronic format documents, subject to Terms and Conditions for Electronic Documents at <http://www.sgs.com/en/Terms-and-Conditions/Terms-e-Document.aspx>. Attention is drawn to the limitation of liability, indemnification and jurisdiction issues defined therein. Any holder of this document is advised that information contained hereon reflects the Company's findings at the time of its intervention only and within the limits of Client's instructions, if any. The Company's sole responsibility is to its Client and this document does not exonerate parties to a transaction from exercising all their rights and obligations under the transaction documents. This document cannot be reproduced except in full, without prior written approval of the Company. Any unauthorized alteration, forgery or falsification of the content or appearance of this document is unlawful and offenders may be prosecuted to the fullest extent of the law. Unless otherwise stated the results shown in this test report refer only to the sample(s) tested and such sample(s) are retained for 30 days only.

Attention: To check the authenticity of testing / inspection report & certificate, please contact us at telephone: (86-755) 8307 1443, or email: CN.Doccheck@sgs.com